

## Adenoviral Knockdown Virus Data Sheet

### Vector Information

Vector: E1/E3 deleted adenoviral serotype 5 vector  
Expression cassette: shRNA under control of human U6 promoter

### Target Information

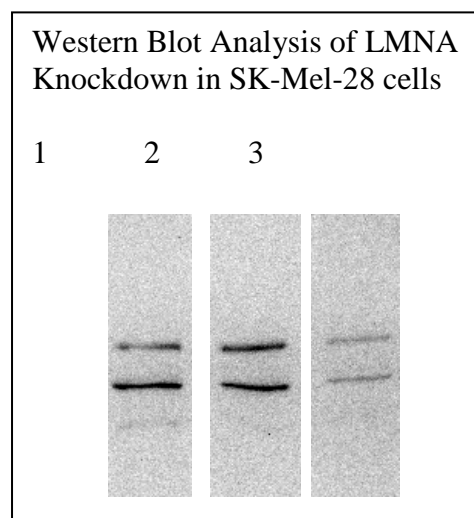
Target Gene: **Lamin A/C**  
Specimen: Homo sapiens  
RefSeq#: NM\_002306

### Validation

Validation Method: Western Blot  
Cell line used for validation: Sk-Mel-28  
Total protein prepared: 64 h post transduction  
Antibody used for validation: CST antibody #2032  
Detection Method: ECL  
Quantification Method: Densitometrically  
Quantification Software: Quantity One (BioRad)

### Results

KD rel. to none transduced cells: 70%  
KD rel. to cells transduced with control virus: 70%



Western Blot showing LMNA expression in extracts prepared from SK-Mel-28 cells (lane 1), SK-Mel-28 cells transduced with control vector (lane 2) and with the adenoviral vector Ad-shLMNA expressing a shRNA directed against LMNA mRNA (lane 3).