

Adenoviral Knockdown Virus Data Sheet

Vector Information

Vector: E1/E3 deleted adenoviral serotype 5 vector
Expression cassette: shRNA under control of human U6 promoter

Target Information

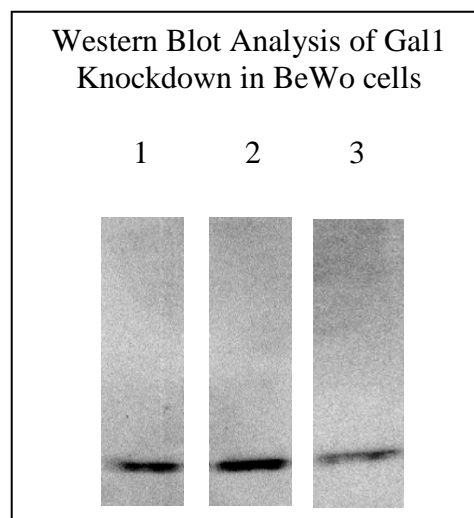
Target Gene: **Galectin 1 (Gal1)**
Specimen: Homo Sapiens
RefSeq#: NM_002305

Validation

Validation Method: Western Blot
Cell line used for validation: BeWo
Total protein prepared: 64 h post transduction
Antibody used for validation: R&D antibody #A1152
Detection Method: ECL
Quantification Method: Densitometrically
Quantification Software: Quantity One (BioRad)

Results

KD rel. to none transduced cells: 65%
KD rel. to cells transduced with control virus: 70%



Western Blot showing Gal1 expression in extracts prepared from BeWo cells (lane 1), BeWo cells transduced with control vector (lane 2) and with the adenoviral vector Ad-shGal1 expressing a shRNA directed against Gal1 mRNA (lane 3).