

Adenoviral Knockdown Virus Data Sheet

Vector Information

Vector: E1/E3 deleted adenoviral serotype 5 vector
 Expression cassette: shRNA under control of human U6 promoter

Target Information

Target Gene: Catalase
 Specimen: Homo sapiens
 RefSeq#: NM_001752

Validation

Validation Method: qRT-PCR, Relative Quantification
 Cell line used for validation: BT20
 RNA prepared: 48h post transduction
 Total RNA used in RT: 1 µg
 cDNA Primer: OligodT/Random Hexamer
 Real Time Platform: Light Cycler 480 (Roche)
 Detection Method: SYBR I
 Reference Gene: Topoisomerase 1 (TOP1)
 Amplicon Integrity verified by: Melting Point Analysis

Results

	CP Target	CP Ref	Delta CP	Delta CP rel to Ctrl	%Target expr rel to Ctrl
Ad-Ctrl	25,50	21,38	4,12	0,00	100%
Ad-341	28,13	20,92	7,21	3,10	12%

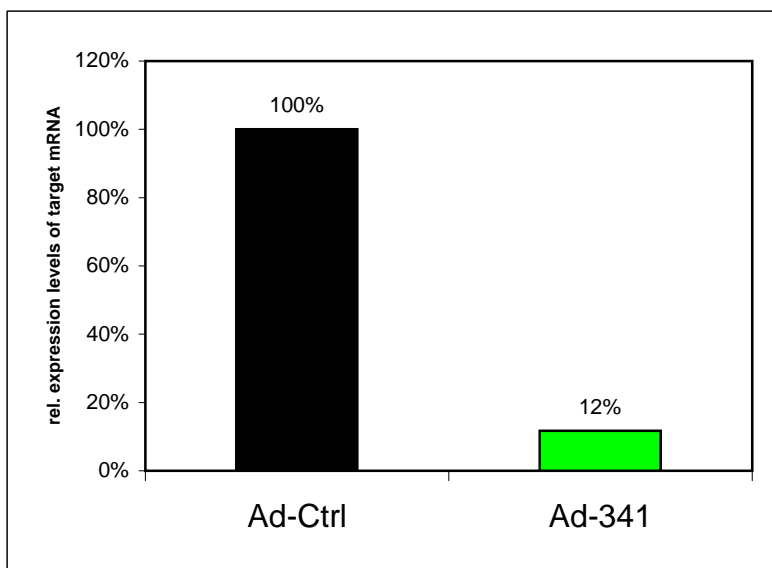


Figure 1

Reduction of Catalase-mRNA 48h after transduction with an adenoviral vector expressing a target-specific shRNA in comparison to cells transduced with control vector